

Dana C. Douglass, Jr., 1914-1999

Dana Douglass was born in Portland, Maine on August 21, 1914 the son of Dana and Martha Douglass. He graduated from Governor Dummer Academy, South Byfield, Mass., in 1933 and from Dartmouth College, Hanover, NH, in 1937.

After graduating from college he was employed with an investment trust in Jersey City, NJ, for three years prior to moving to Portland where he established the Stanley-Dana Corp., a sound equipment company.

In 1939, he married Barbara Harte Anderson of Newton Center, Mass. They lived in Portland for the next ten years.

In 1948 Mr. Douglass reopened the Bumpus Quarry in Albany and the Newry Mine. The mining operations provided pegmatites, which included the strategic mineral, mica, used for insulation in military planes and ships. In 1950 he relocated his family, Barbara and their four daughters, to Bethel. For the next 50 years the Douglasses lived at the former Samuel B. Twitchell property in Mayville.

In June 1953, Dana Douglass, Northern Mining Corporation, surrendered the mining lease on the Bumpus Mine and turned his attention to Newry and Andover according to Van King's book on feldspar mining. The same source records that Mr. Douglass became a manager for the Beryllium Development Corp. in Bethel during the 1954-55 period and later.

In the 1960's Mr. Douglass was employed at the Earth Station for Satellite Communications at Andover, Maine.

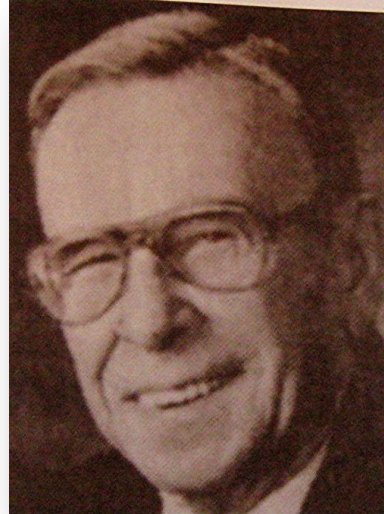
He formed his own company, Dana C. Douglass Associates, in land surveying. His business covered most of the area around Bethel and Sunday River Ski Area.

From 1972 to 1983 he was a member of the Bethel Planning Board and chaired the board for six years. For 11 years he was a board member of the Maine Soil and Water Conservation Commission.

In 1980 the Douglasses opened the Douglass Place Bed and Breakfast in their home which continued as a major hospitality function for twenty years.

Mr. Douglass was president of the P. T. A. and of the Bethel Area Health Center. He was a frequent blood donor. He was clerk of the West Parish Congregational Church for 22 years. In 1974 the Douglasses received the Henry Hastings Award for citizenship from the Greater Bethel Chamber of Commerce.

Mr. Douglass's son-in-law Peter Weeks served on the board of Bethel Selectmen and chaired the board.



His principal source of enjoyment was his flower gardens, which became a major summer attraction for all those traveling through Bethel on Route 2.

Dana C. Douglass, Jr., died at his residence in Bethel on July 30, 1999.

The Bethel Journals
Donald G Bennett
PO Box 763
Bethel, Maine 04217
www.thebethejournals.info